



SMART RESTART

SCHOOL DISTRICT OF MONROE

PLANNING FOR A SAFE RETURN TO SCHOOL IN 2020-2021

REOPENING GUIDE

PLANS & SYSTEMS TO ADDRESS COVID-19

STAY CONNECTED

WWW.MONROESCHOOLS.COM

WWW.FACEBOOK.COM/MONROESCHOOLS.WI

TWITTER: @MONROESCHOOLSWI

THIS PLAN IS SUBJECT TO CHANGE AS PUBLIC HEALTH GUIDELINES ARE UPDATED.



SCHOOL OPENING PLANS

HOW WILL THE DISTRICT MAKE DECISIONS ABOUT IN-PERSON VERSUS VIRTUAL LEARNING?

PLAN A

WI Department of Health Services classifies Green County COVID-19 activity level as LOW or MEDIUM
All students allowed to attend school Monday through Friday (early release on Friday afternoon)
Personal Protective Equipment (PPE) provided to ensure safety
Physical distancing implemented to the greatest extent possible

PLAN B

WI Department of Health Services classifies Green County COVID-19 activity level as HIGH
Students split into 2 groups that alternate between week of in-person learning and week of virtual learning
Students attend school Monday through Thursday (Fridays dedicated to providing online support)
Temperature checks for all students and staff at beginning of each school day
Personal Protective Equipment (PPE) provided to ensure safety
Physical distancing implemented to allow for 6 feet of physical distancing within classrooms

PLAN C

Determination made by Superintendent as warranted after monitoring relevant information, including:

- Active number of COVID-19 cases in Green County and associated trends
- Active number of COVID-19 cases within the School District of Monroe
- Community hospitalization rate
- Staffing availability
- Other metrics as determined appropriate

All students participate via virtual learning

PLAN H

Parents may select 100% online instructional services for their children regardless of District opening status
Students will participate via instructional videos and digital learning resources
Students access classroom instruction as dictated by district opening status (A, B or C)



FACE COVERING REQUIREMENTS

WHAT ARE THE EXPECTATIONS RELATED TO FACE COVERINGS IN SCHOOLS?

FACE COVERING EXPECTATIONS

During the 2020-21 school year, all students are required to wear face coverings at all times while attending school. Approved face covering include surgical masks, cloth masks, and neck gaiters. All face coverings must fit tightly around the face and cover the mouth and nose at all times.

Bandanas, single layer cloth masks, masks with vents and single layer neck gaiters will not be allowed. School administrators reserve the right to determine the acceptability of a face covering. Those that do not have an acceptable mask will be provided one by the school.

All face coverings must follow current school dress codes. Masks that are deemed offensive or inappropriate will result in a request to replace with a school provided mask.

EXEMPTIONS & ACCOMMODATIONS FOR FACE COVERINGS

Students may be exempted from the face covering requirement if they possess one of the following:

- A document from a personal physician indicating that the student has a medical condition that could be negatively impacted by wearing a face covering. Physicians will be asked to provide recommendations regarding appropriate face covering options for the student, if any.
- An IEP or 504 plan that states that a face covering is not appropriate due to a specific and significant issue that is directly related to an identified disability. The student's IEP team will work with the family to identify appropriate face covering substitutions or accommodations to provide protection for the student and others at the school.

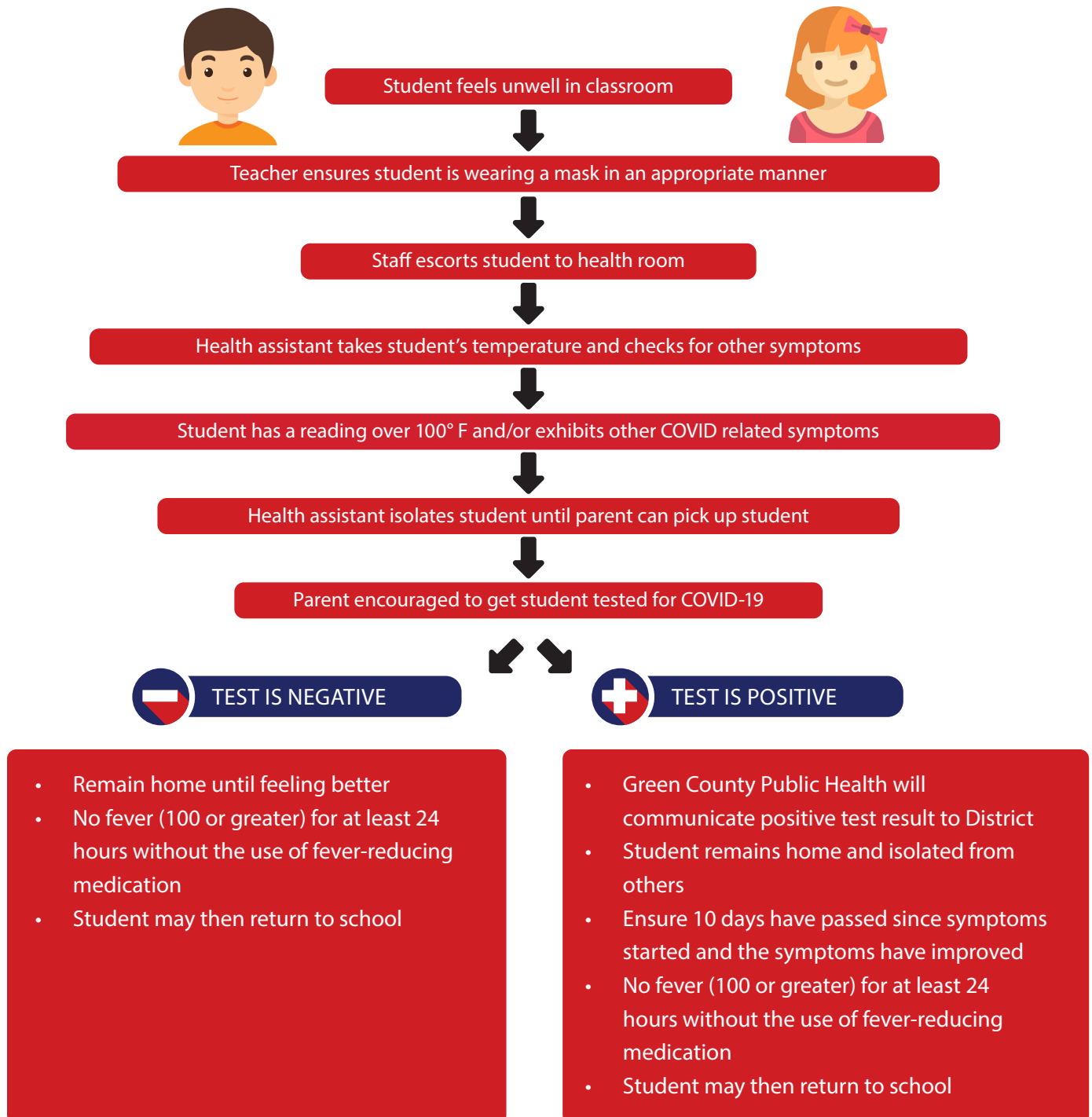
ENFORCEMENT OF FACE COVERING EXPECTATIONS

If a student is defiant and refuses to wear a face covering appropriately without the previously mentioned documentation, they will be subject to the following consequences:

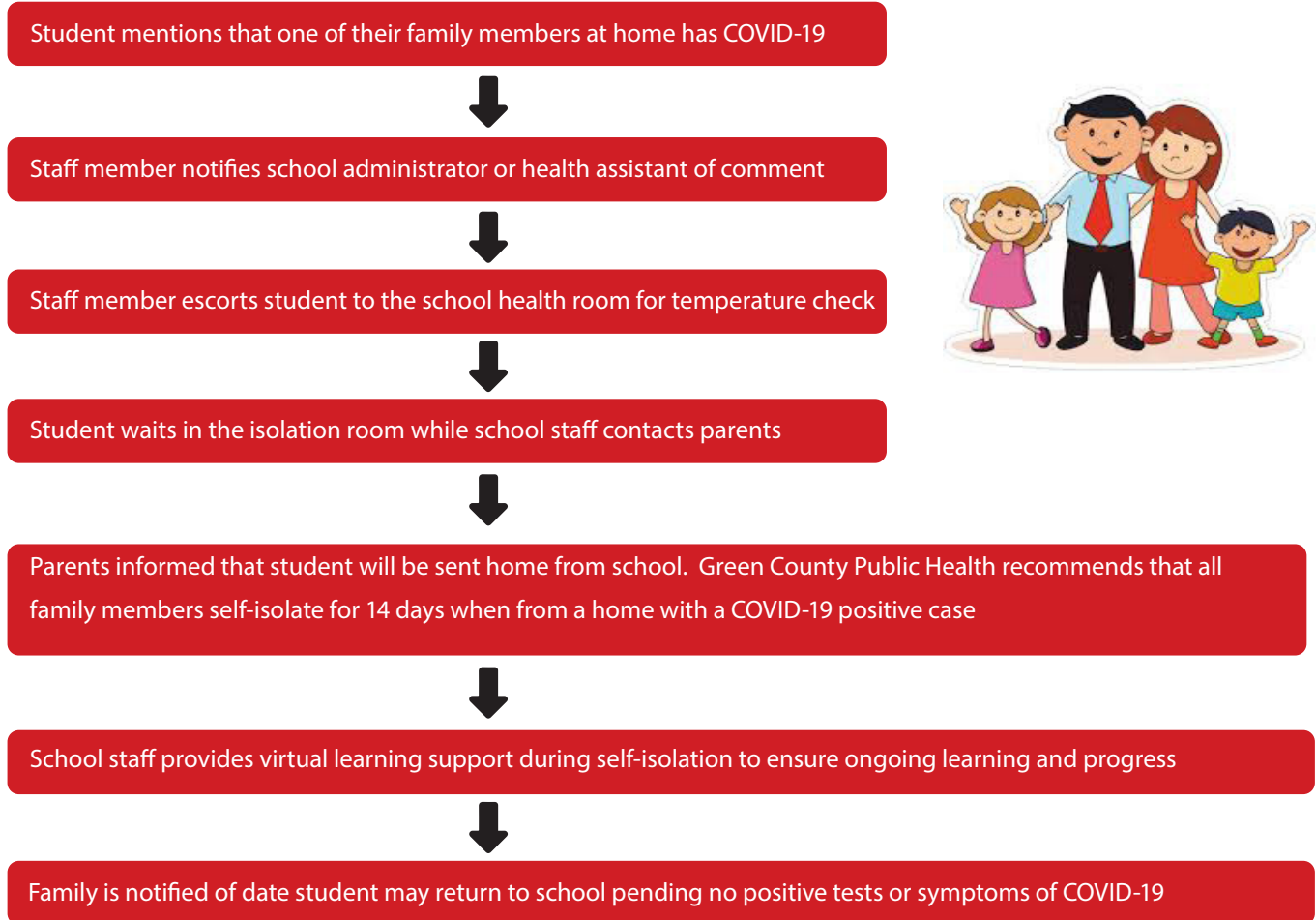
- 1st Offense - Student will be sent home for the remainder of the day with a written notice of the violation.
- 2nd Offense - Student will automatically be placed in the district virtual programming (Plan H) for the remainder of the grading period (semesters in elementary and middle school, trimesters in high school).

Students that are not able to wear masks consistently due to age, developmental delays or disability will not automatically face disciplinary action. Instead, school staff will make every effort to teach these students to wear a mask appropriately, and if necessary, provide support to help keep all students and staff safe.

WHAT IF A STUDENT TESTS POSITIVE?



WHAT IF A FAMILY MEMBER TESTS POSITIVE?



COVID-19 SYMPTOMS

- Fever (100 or higher)
- Chills
- Cough
- Difficulty breathing
- Fatigue
- Muscle or body aches
- Headache
- Sore throat
- New loss of taste or smell
- Congestion or runny nose
- Vomiting
- Diarrhea

WHAT IF A STAFF MEMBER TESTS POSITIVE?



Staff member tests positive for COVID-19



Staff member alerts school administrator and is immediately removed from duty



School administrator alerts District regarding positive test



District contacts Green County Public Health to notify them of a positive case. Green County Public Health will obtain test results, interview positive case, and begins contact tracing with assistance from the District



Green County Public Health alerts any person(s) or families that need to self-isolate due to identified close contact with positive case



If necessary, a substitute will be identified to provide services during the time of self-isolation



Staff member will follow COVID-19 response protocol and will not return to work until cleared by Green County Public Health and the School District of Monroe

WHAT STEPS SHOULD A STUDENT OR STAFF MEMBER TAKE IF THEY FEEL SICK?

Green County Public Health Department Return to School - Fall 2020

Exposure and Symptom Guidance

Experiencing Symptoms Without Known Exposure

The following are guidelines for a student or staff member who is experiencing symptoms

- If you are experiencing symptoms, you are encouraged to seek COVID testing. People with symptoms can be tested at:
 - Fast Care in Monroe
 - The Alliant Energy Center in Madison
 - For testing information, contact your physician.
- If you receive a positive test result: stay home for at least 10 days*. You must also be fever-free without the use of fever-reducing medication for 24 hours and see improvement in other symptoms.
- If you receive a negative test result; you may return once you have been fever-free without the use of fever-reducing medication and symptom-free for 24 hours.
- If COVID-19 symptoms are present but you are not tested, you must stay home/isolate for 10 days*

Exposed to Positive COVID-19

The following are guidelines for a student or staff member who has been exposed to someone with a positive COVID-19 test. REFER TO FLOW CHARTS (PG 3).

- If you have come into contact with someone who has tested positive, you should quarantine for 14 days* starting from the date of your last contact with the person who tested positive for COVID-19.
- If someone in your home tests positive, you should quarantine while they are sick and continue to quarantine for an additional 14 days* after they are no longer infectious.
- If you are experiencing symptoms, you are encouraged to seek COVID testing. For testing, contact your physician.

Symptoms at School

The following are guidelines for a student or staff member who is exhibiting symptoms of COVID-19 while at school. REFER TO FLOW CHARTS (PG 2)

- Student
 - Student reports symptoms to staff member or staff member observes symptoms.
 - Student will be sent to health isolation room.
 - Parent/guardian will be notified and should arrive to pick up student as soon as possible.
 - Student will need to stay home isolated while waiting for test results. If they are not tested they need to isolate for 10* days.
- Staff
 - Staff member will inform supervisor.
 - Staff member will need to stay home isolated while waiting for test results. If they are not tested they need to isolate for 10* days.

*depending on guidance from Green County Health Department.

COVID-19 SCREENING QUESTIONS

Please answer the following questions each day before students get on the bus or are dropped off at school:

1. Has your student been in close contact with a confirmed case of COVID-19?
2. Has your student been experiencing a cough, shortness of breath, difficulty breathing, or a sore throat?
3. Has your student had a fever over 100 degrees in the last 24 hours?
4. Has your student had a new loss of taste or smell?
5. Has your student had muscle aches, pains, or chills?
6. Has your student experienced nausea or vomiting in the past 24 hours?

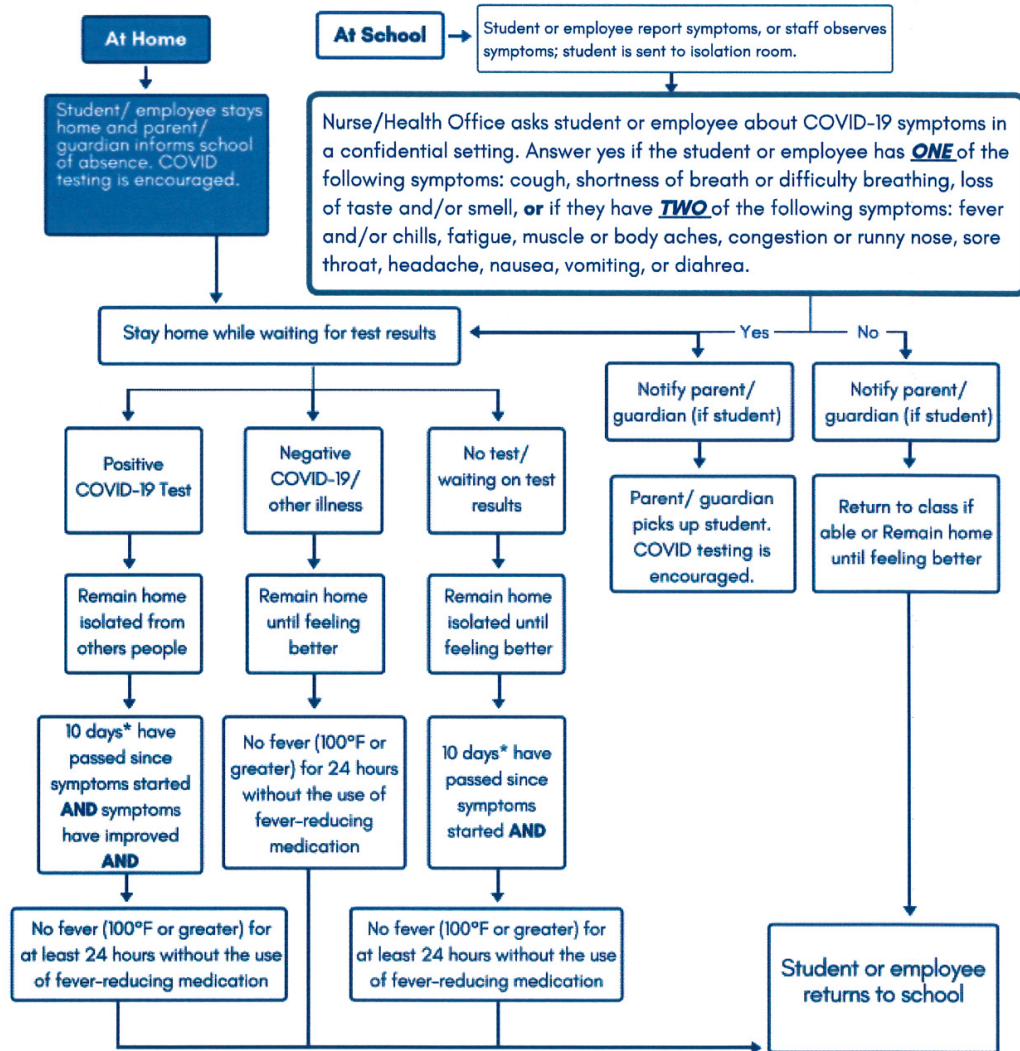
If the answer to any of these is yes, please do not send your student to school. Please contact your physician.

Green County Public Health Department

Return to School - Fall 2020

Student or Employee Feels Sick

COVID-19 Response Protocols



*days depending on guidance from Green County Public Health Department.

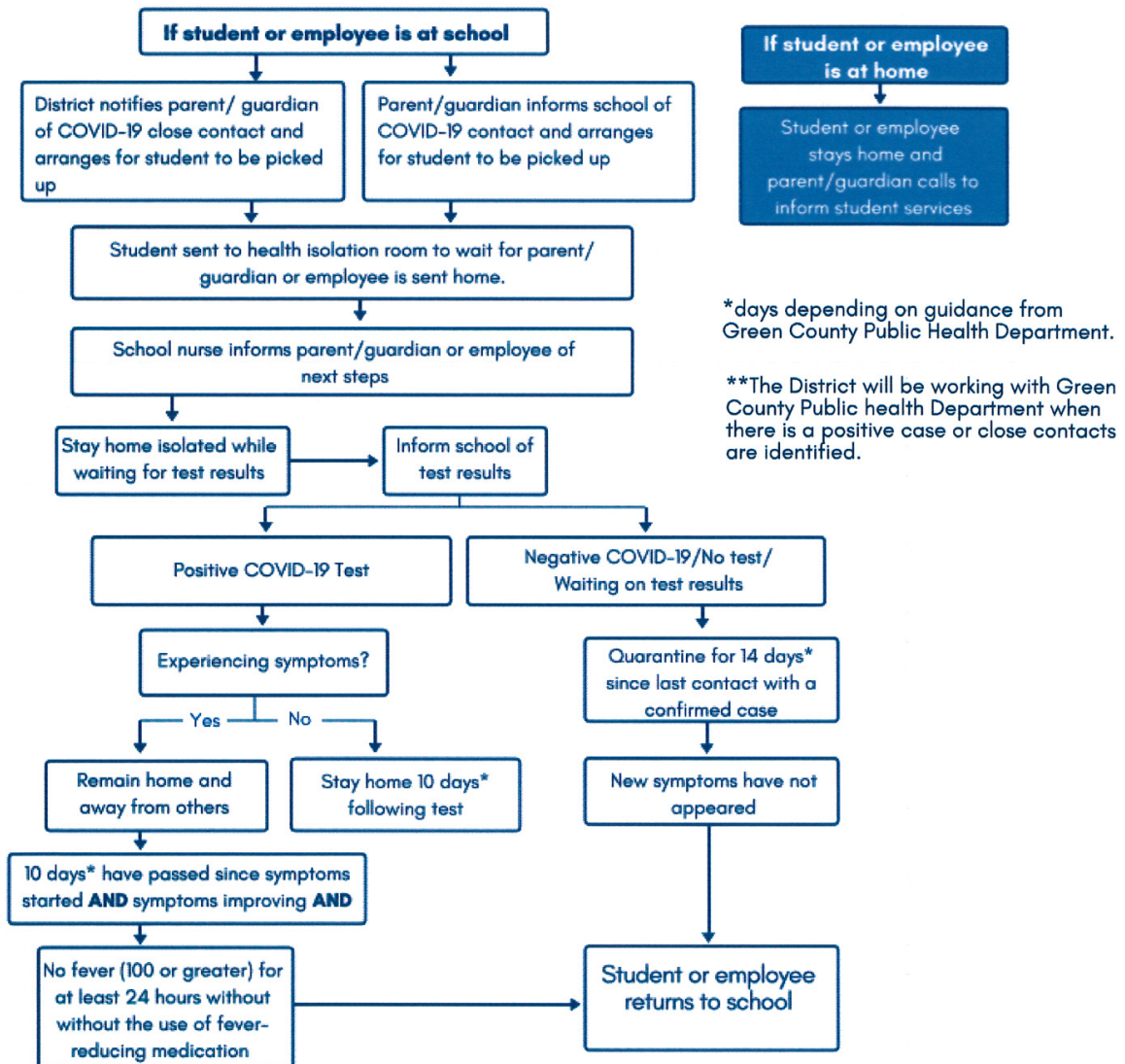
** The District will be working with Green County Health Dept. when there is potentially close contact of positive cases and deciding if further action is needed on a case by case basis.

Green County Public Health Department

Return to School - Fall 2020

Student or Employee Close Contact With Confirmed COVID-19 Individual

COVID-19 Response Protocols



Adapted from School District of Baraboo and Fond du Lac County Health Department.



THIS REOPENING GUIDE IS SUBJECT TO CHANGE AS PUBLIC HEALTH GUIDELINES ARE UPDATED.

#CheesemakerPride

STAY CONNECTED

WWW.MONROESCHOOLS.COM

WWW.FACEBOOK.COM/MONROESCHOOLS.WI

[@MONROESCHOOLSWI](https://www.instagram.com/MONROESCHOOLSWI)